



*Jordan fishwick*

ALTRINCHAM  
Manchester Road



## Manchester Road, Altrincham, WA14 4YW

£107,000



### The Property

NO ONWARD CHAIN. Jordan Fishwick are pleased to offer this fifth floor, spacious one bedroom apartment set in the popular Roberts House Development in the heart of vibrant Altrincham.

Internally there is an entrance hallway, spacious open plan modern kitchen/diner with superb views over Altrincham. There is a double bedroom and bathroom with white suite.

The complex comes complete with accessible lifts, intercom access and parking.

The property is situated in the highly desirable and ever popular location of Altrincham and close to Altrincham Town Centre with its famous markets, metro system with direct access to Manchester. The motorway network and Manchester International Airport are on the doorstep and the area is well renowned for its outstanding local schools.

### Directions

WA14 4YW



- Council Tax Band B
- Ground Rent £350 p.a.
- Service Charge £1,288.95
- 1 Bedroom apartment
- Light and modern finish
- Open Plan Living
- Far reaching views
- Located on the fifth floor
- Potential off road parking available

Postcode - WA14 4YW

EPC Rating - C

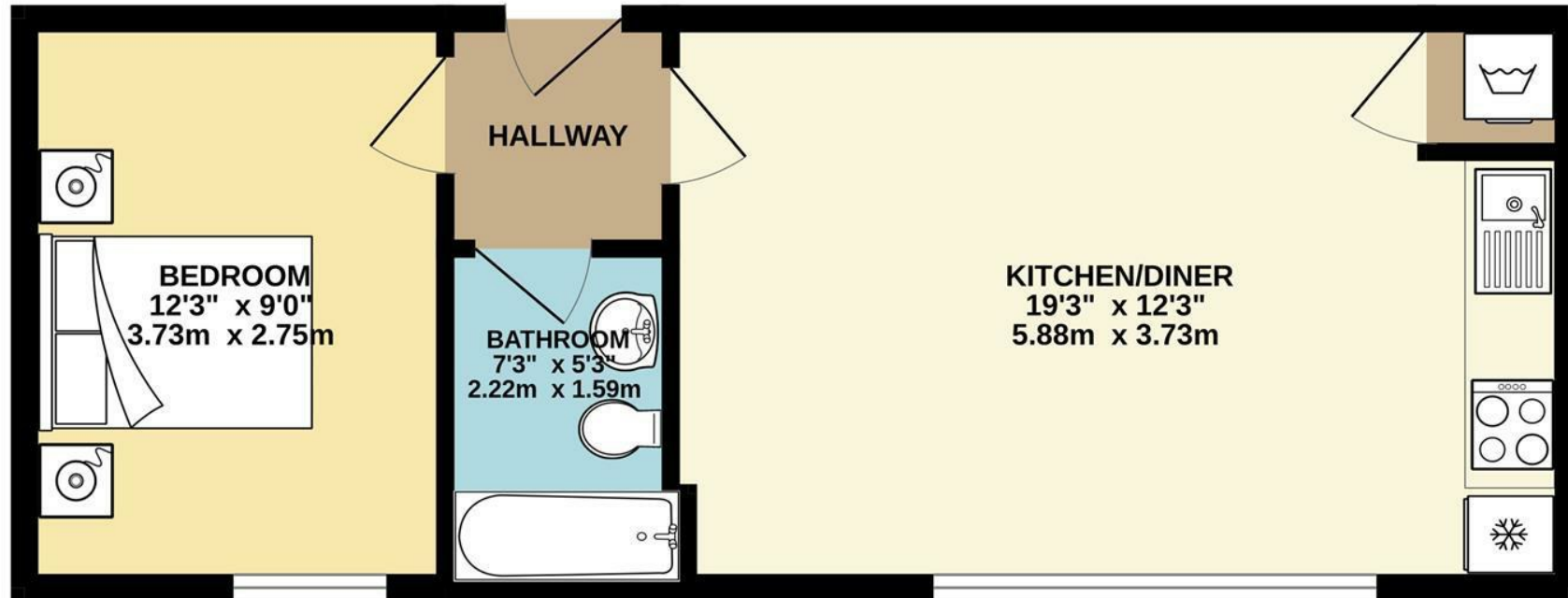
Floor Area - 405.00 sq ft

Local Authority - Trafford

Council Tax - B



405 sq.ft. (37.7 sq.m.) approx.



TOTAL FLOOR AREA : 405 sq.ft. (37.7 sq.m.) approx.

Whilst every attempt has been made to ensure the accuracy of the floorplan contained here, measurements of doors, windows, rooms and any other items are approximate and no responsibility is taken for any error,



These particulars are believed to be accurate but they are not guaranteed and do not form a contract. Neither Jordan Fishwick nor the vendor or lessor accept any responsibility in respect of these particulars, which are not intended to be statements or representations of fact and any intending purchaser or lessee must satisfy himself by inspection or otherwise as to the correctness of each of the statements contained in these particulars. Any floorplans on this brochure are for illustrative purposes only and are not necessarily to scale.

Offices at: Chorlton, Didsbury, Disley, Hale, Glossop, Macclesfield, Manchester Deansgate, Manchester Whitworth Street, New Mills, Sale, Wilmslow and Withington

0161 929 9797